

For Lease

In-line Retail Space Available Next to New ALDI



1200 S. Decatur Blvd.
Las Vegas, NV 89102

Jason Otter
Founding Partner
702.954.4109
jotter@logicCRE.com
S.0168161.LLC

Cooper Powell
Senior Associate
702.954.4154
cpowell@logicCRE.com
BS.0145955.LLC

Bart DeBuono
Senior Associate
702.954.4129
bdebuono@logicCRE.com
S.0176508.LLC

Elena Otter
Client Relations Representative
702.604.3388
eotter@logicCRE.com

Listing Snapshot



\$1.40 PSF NNN
Lease Rate



± 5,994 SF
Available Square Footage



Central
Submarket

Property Highlights

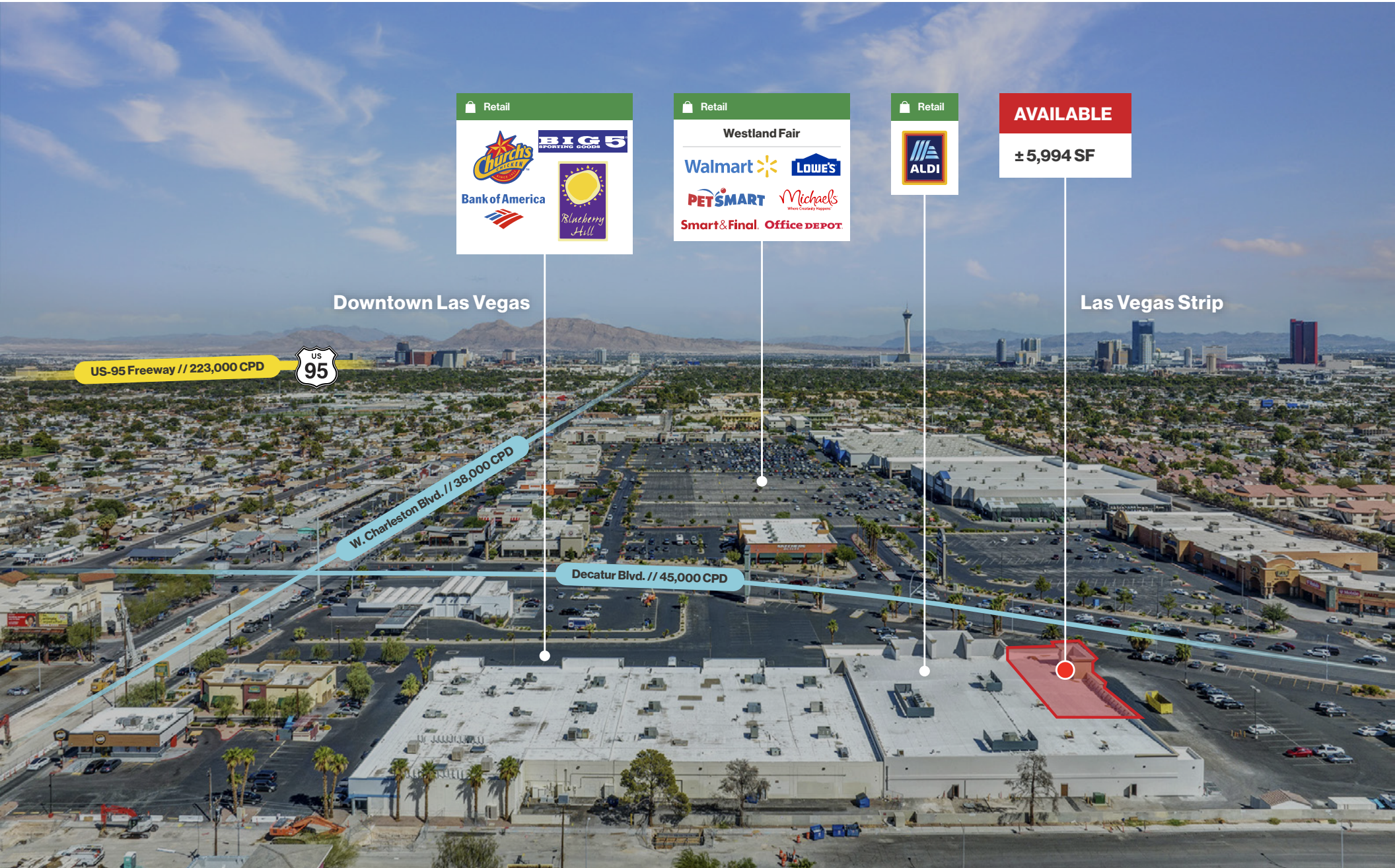
- Built-out In-line space available
- Prominent tenants include ALDI, Big 5 Sporting Goods, Farmer Boy's, Church's Texas Chicken, LV Beauty Supplies, Gen X Clothing and Bank of America
- Busy Decatur Blvd. and Charleston Blvd. retail corridor with traffic counts in excess of 82,901 CPD
- Dominant retail center in close proximity to PetSmart, Michael's, Lowe's, Walmart Super Center, Sketchers Factory Outlet, Supercuts, Sally Beauty, Eyebrows R Us, Edible Arrangements, PT's Place, Raising Cane's, Jamba, Starbucks, Firehouse Subs, Freddy's Frozen Custard & Steakburgers, Urgent Care, Little Caesars, Boot Barn, Olive Garden, IHOP and O'Reilly Auto Parts

Demographics

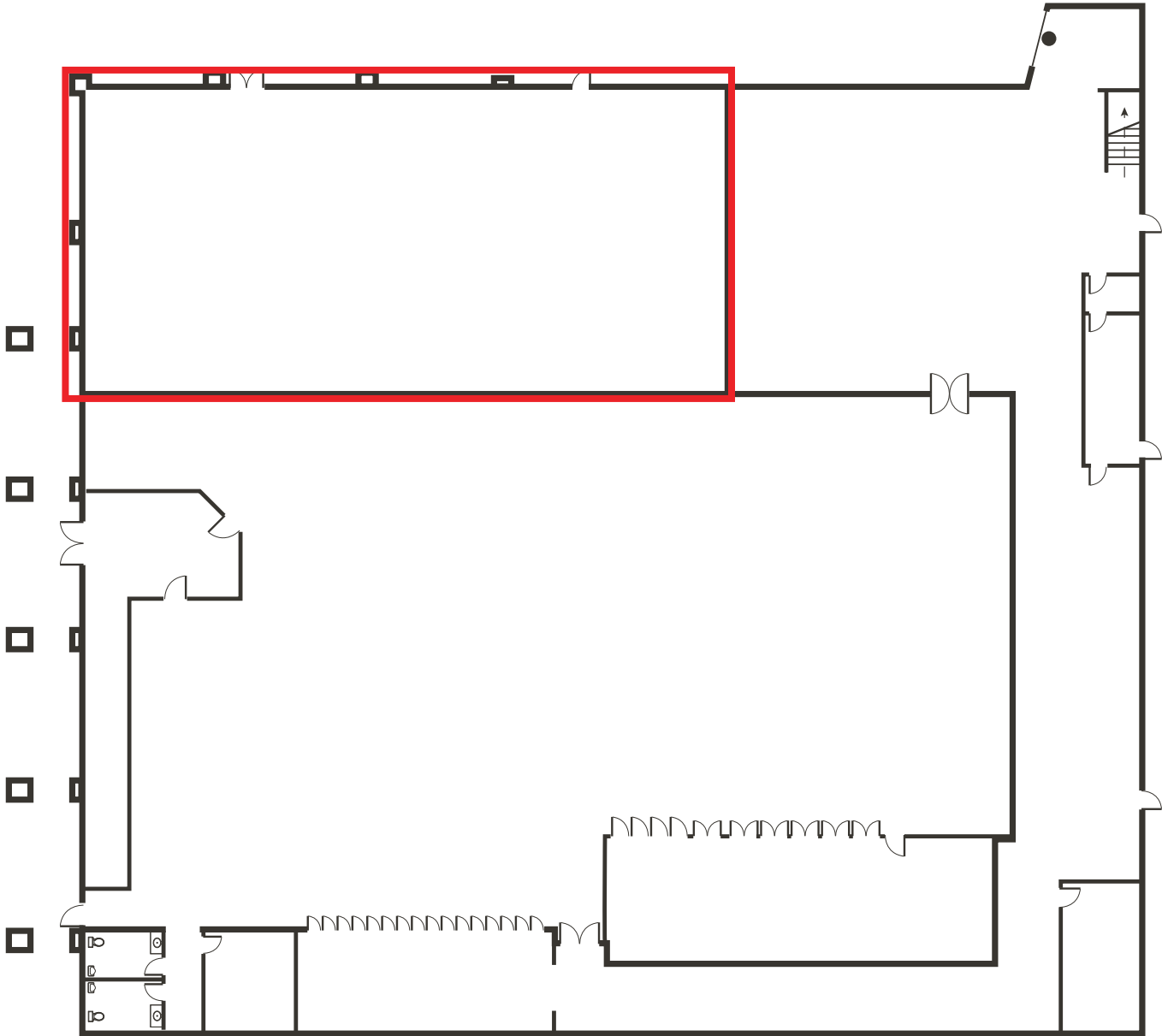
	1-mile	3-mile	5-mile
2025 Population	20,639	173,771	481,881
2025 Average Household Income	\$74,856	\$81,108	\$81,608
2025 Total Households	8,277	66,440	195,391











LOGIC Commercial Real Estate

Specializing in Brokerage and Receivership Services



Join our email list and
connect with us on LinkedIn

The information herein was obtained from sources deemed reliable; however LOGIC Commercial Real Estate makes no guarantees, warranties or representation as to the completeness or accuracy thereof.

For inquiries please
reach out to our team.

Jason Otter
Founding Partner
702.954.4109
jotter@logicCRE.com
S.0168161.LLC

Cooper Powell
Senior Associate
702.954.4154
cpowell@logicCRE.com
BS.0145955.LLC

Bart DeBuono
Senior Associate
702.954.4129
bdebuono@logicCRE.com
S.0176508.LLC

Elena Otter
Client Relations Representative
702.604.3388
eotter@logicCRE.com