

ALDI SUBLEASE ST PETE

3327 9th St. | St. Petersburg, FL 33704 (Dr. Martin Luther King Jr. St. N)

Retail For Sublease



LQ Commercial
REAL ESTATE SERVICES

LQCRE.COM

GOOGLE TOUR



- ALDI-anchored shopping center for sublease . Redeveloped in 2025!
- Shopping center located amongst neighboring retail synergy along the trending redeveloping corridor of Dr. MLK Jr. St N
- Site located in the well-established sub-market of St. Petersburg surrounded by a strong-density of household population.
- Centrally-located with convenient access to main thoroughfares such as, 38th Ave N, 4th St N, I-275.

[LQCRE.COM/ALDI-SUBLEASE-ST-PETE](https://lqcre.com/ALDI-SUBLEASE-ST-PETE)



5-MILE POPULATION

245,670



5-MILE INCOME

\$111,702



5-MILE TOTAL HH'S

114,826



5-MILE EMPLOYEES

120,552



[LQCRE.COM](https://lqcre.com)

Eli Dioso

D: 813.999.1947

edioso@lqcre.com

Information obtained from owner(s) or sources deemed reliable. We have no reason to doubt its accuracy, but cannot guarantee it. Property is subject to change or withdraw without notice.

ALDI SUBLEASE ST PETE

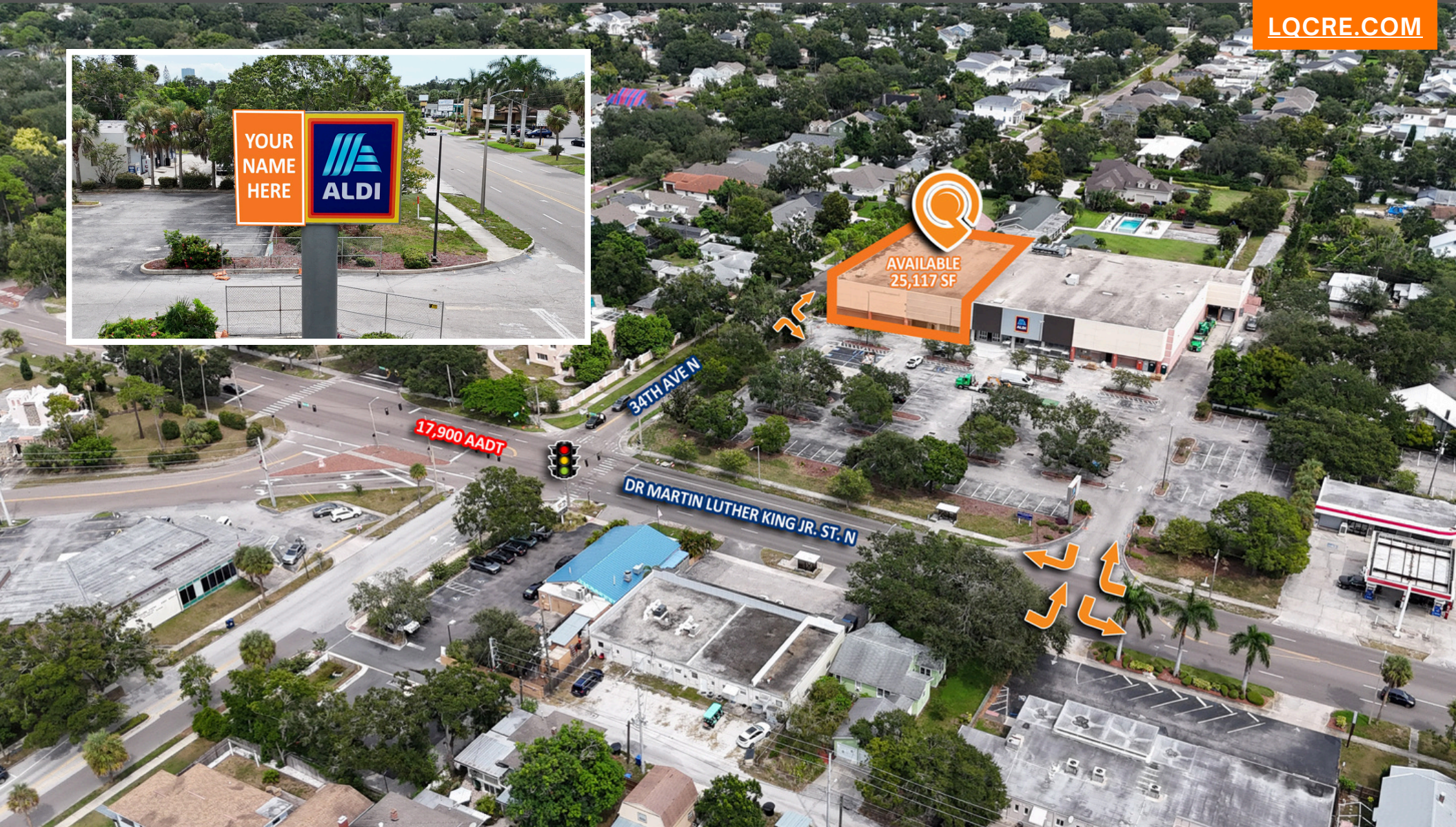
3327 9th St. | St. Petersburg, FL 33704 (Dr. Martin Luther King Jr. St. N)

Retail For Sublease



LQ Commercial
REAL ESTATE SERVICES

LQCRE.COM



ALDI SUBLEASE ST PETE

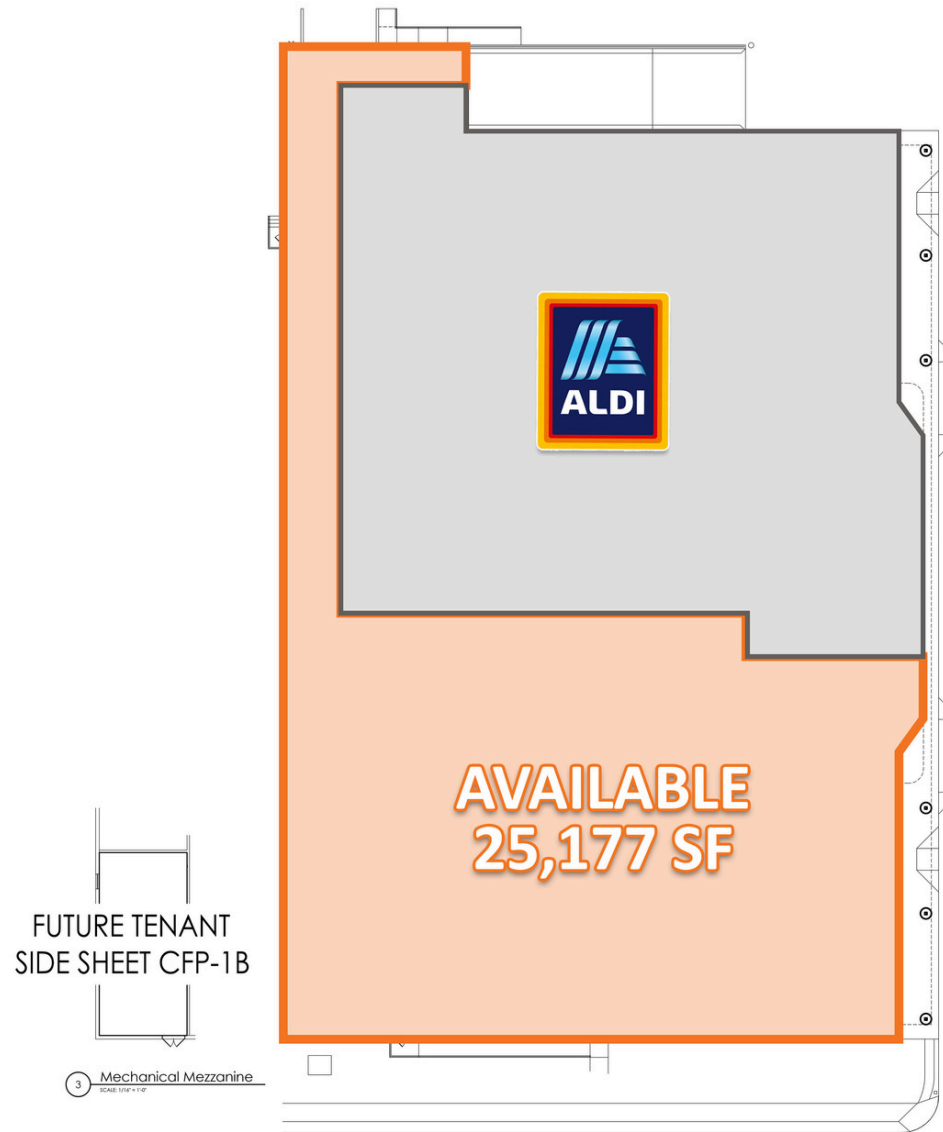
3327 9th St. | St. Petersburg, FL 33704 (Dr. Martin Luther King Jr. St. N)

Retail For Sublease



LQ Commercial
REAL ESTATE SERVICES

LQCRE.COM



ALDI SUBLEASE ST PETE

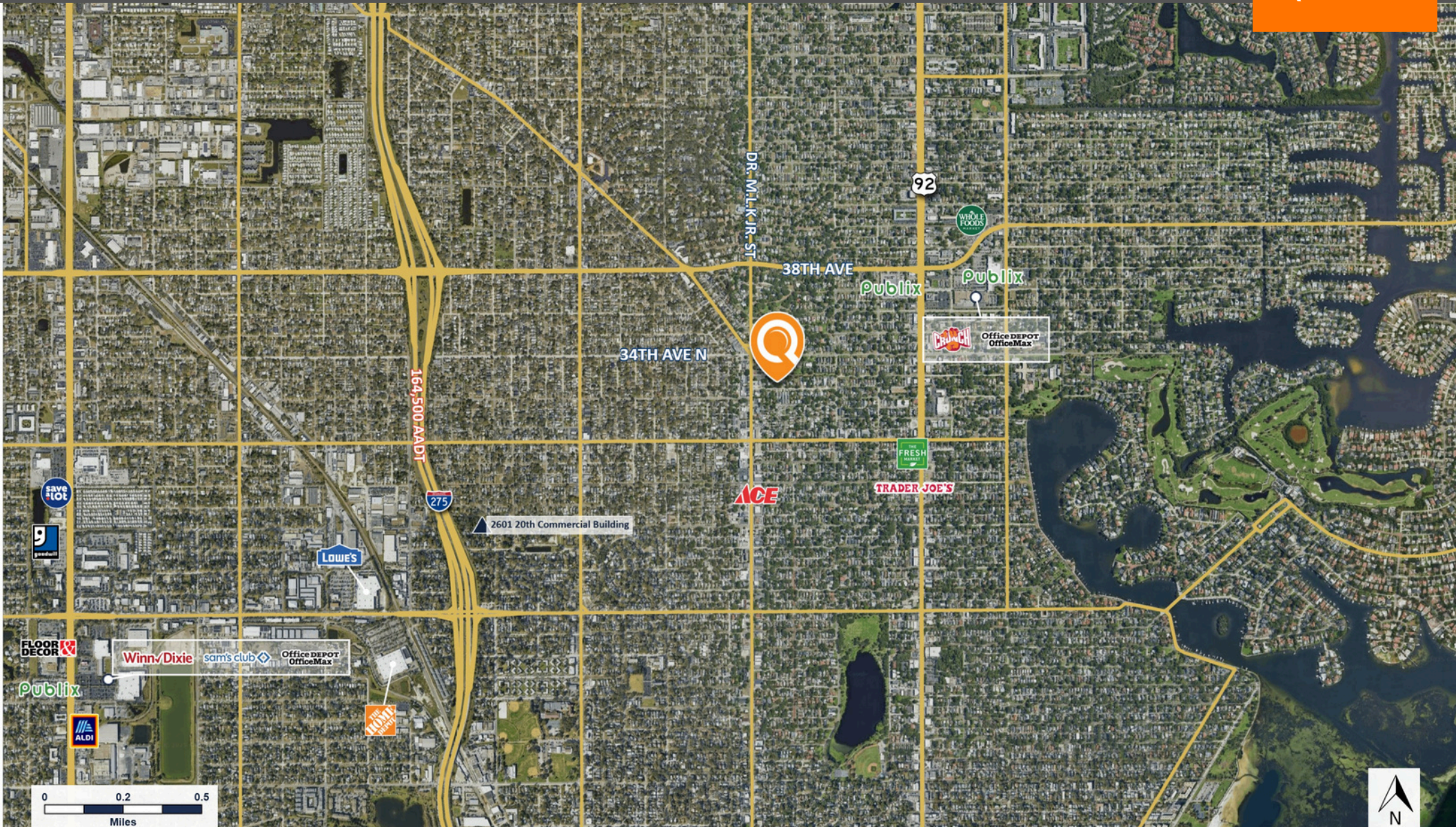
3327 9th St. | St. Petersburg, FL 33704 (Dr. Martin Luther King Jr. St. N)

Retail For Sublease



LQ Commercial
REAL ESTATE SERVICES

LQCRE.COM



LQCRE.COM

Eli Dioso

D: 813.999.1947

edioso@lqcre.com

Information obtained from owner(s) or sources deemed reliable. We have no reason to doubt its accuracy, but cannot guarantee it. Property is subject to change or withdraw without notice.