



925 E. LANCASTER AVE

SCOTT WEISS
sweiss@hellomsc.com
215.883.7396

JASON BOCK
jbock@hellomsc.com
215.883.7408

MICHAEL SALOVE
msalove@hellomsc.com
310.622.4532



- Strong co-tenancy in center with the Home Depot, JoAnn Fabrics, Best Buy, PJ Whelihan's and more
- Pylon space available and ample parking
- Population over 37,000 with HH incomes over \$115,000 and over 29,000 employees all within 5 miles

DEMOGRAPHICS



EST. POPULATION

1 mi | 6,789
3 mi | 40,271
5 mi | 99,109



EST. AVG HH INCOME

1 mi | \$140,011
3 mi | \$150,909
5 mi | \$159,514



EST. EMPLOYEES

1 mi | 5,183
3 mi | 23,636
5 mi | 49,823

JOIN THESE AREA TENANTS

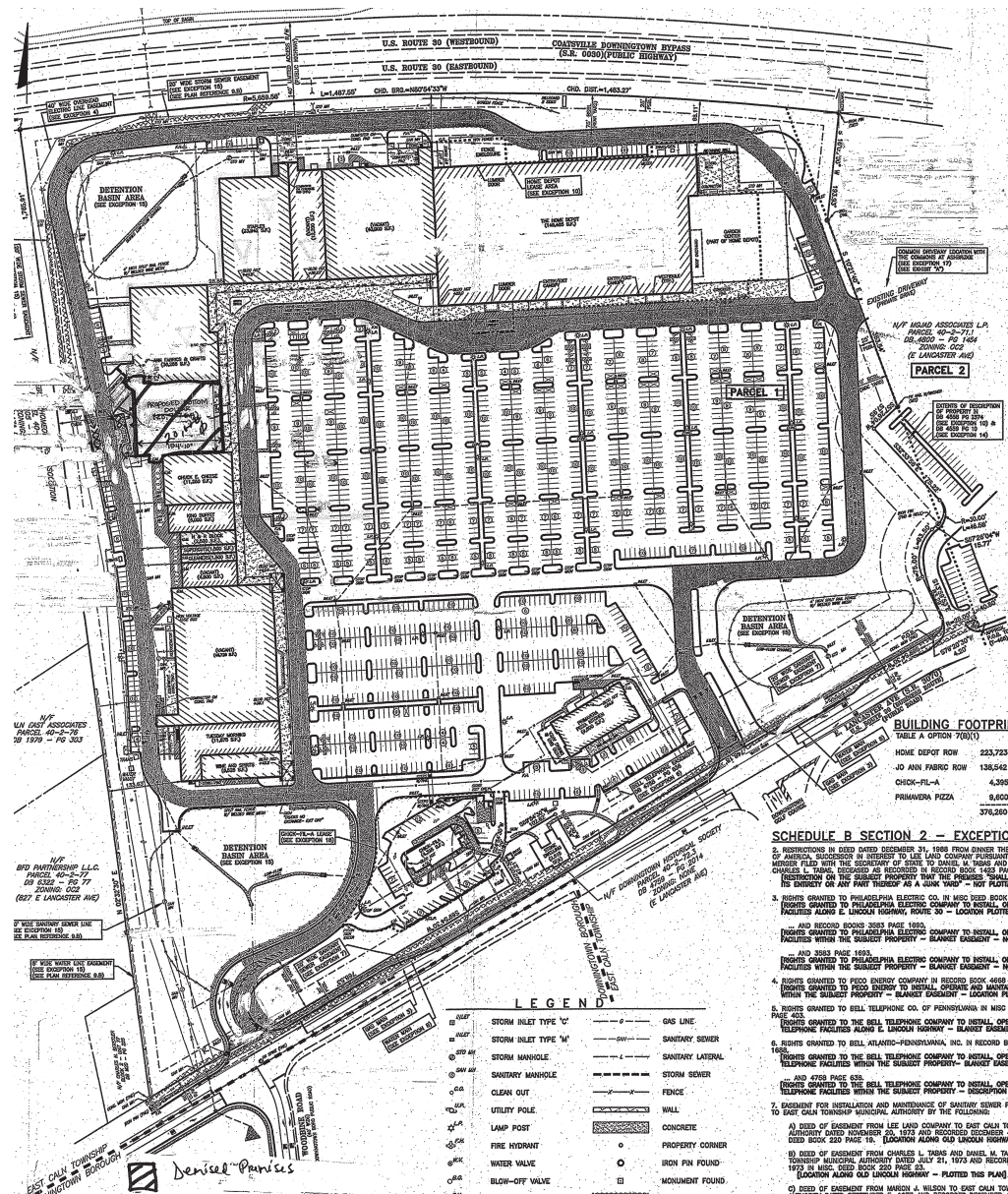


JOANN





MICHAEL SALOVE
msalove@hellomsc.com
310.622.4532



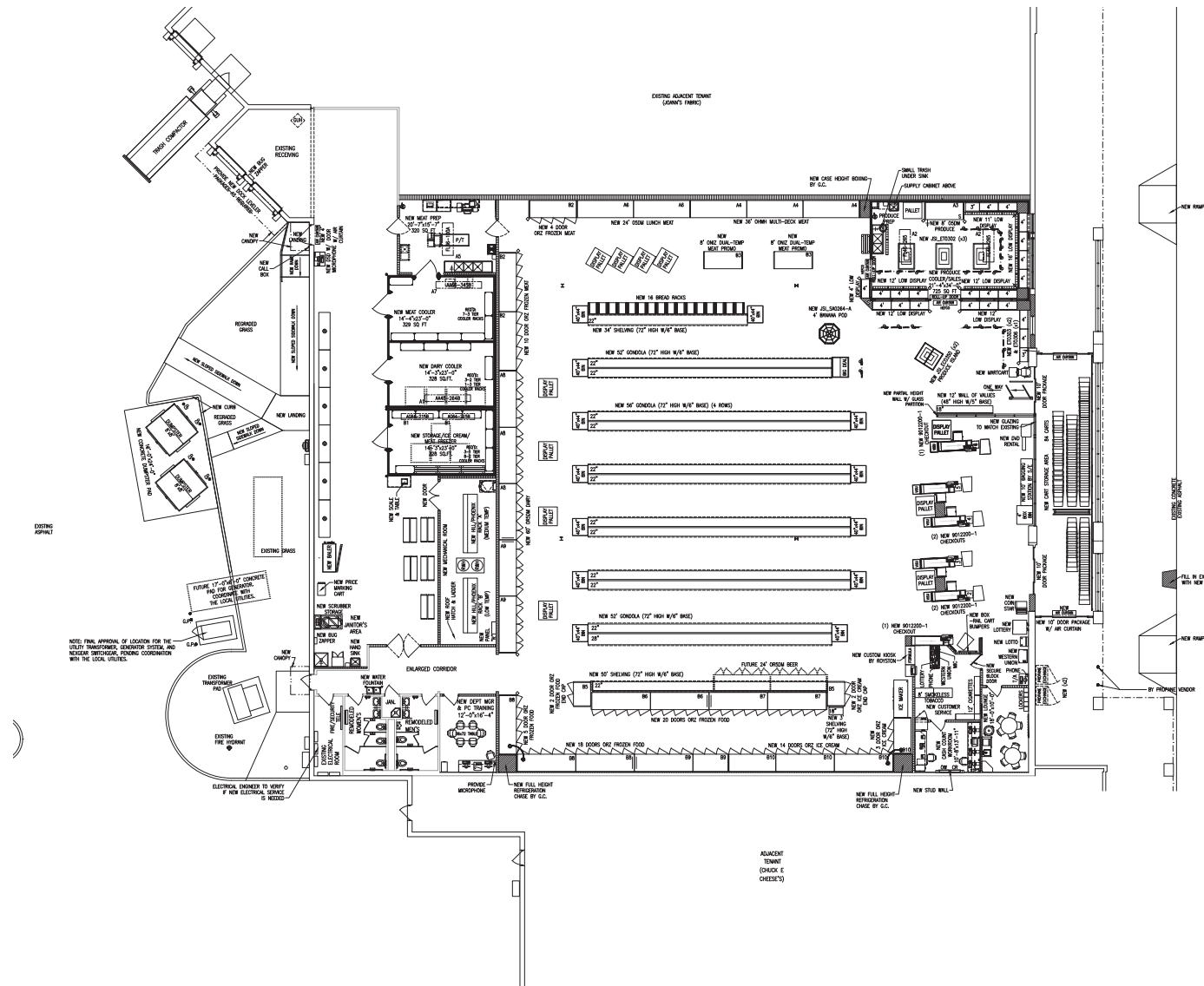


925 E. LANCASTER AVE

SCOTT WEISS
sweiss@hellomsc.com
215.883.7396

JASON BOCK
jbock@hellomsc.com
215.883.7408

MICHAEL SALOVE
msalove@hellomsc.com
310.622.4532



The information contained herein has been obtained from sources deemed reliable. MSC cannot verify it and makes no guarantee, warranty or representation about its accuracy. Any projections, opinions, assumptions or estimates provided by MSC are for discussion purposes only and do not represent the current or future performance of a property, location or market.

MSC



925 E. LANCASTER AVE

SCOTT WEISS
sweiss@hellomsc.com
215.883.7396

JASON BOCK
jbock@hellomsc.com
215.883.7408

MICHAEL SALOVE
msalove@hellomsc.com
310.622.4532

