

Commercial Land

Parcel A: ±2.23 Acres

Parcel C: ±7.76 Acres

3891 W Carleton Road
Hillsdale, Michigan 49242

Join Planned ALDI and Newly Opened Meijer Along Carleton Road



Commercial Land

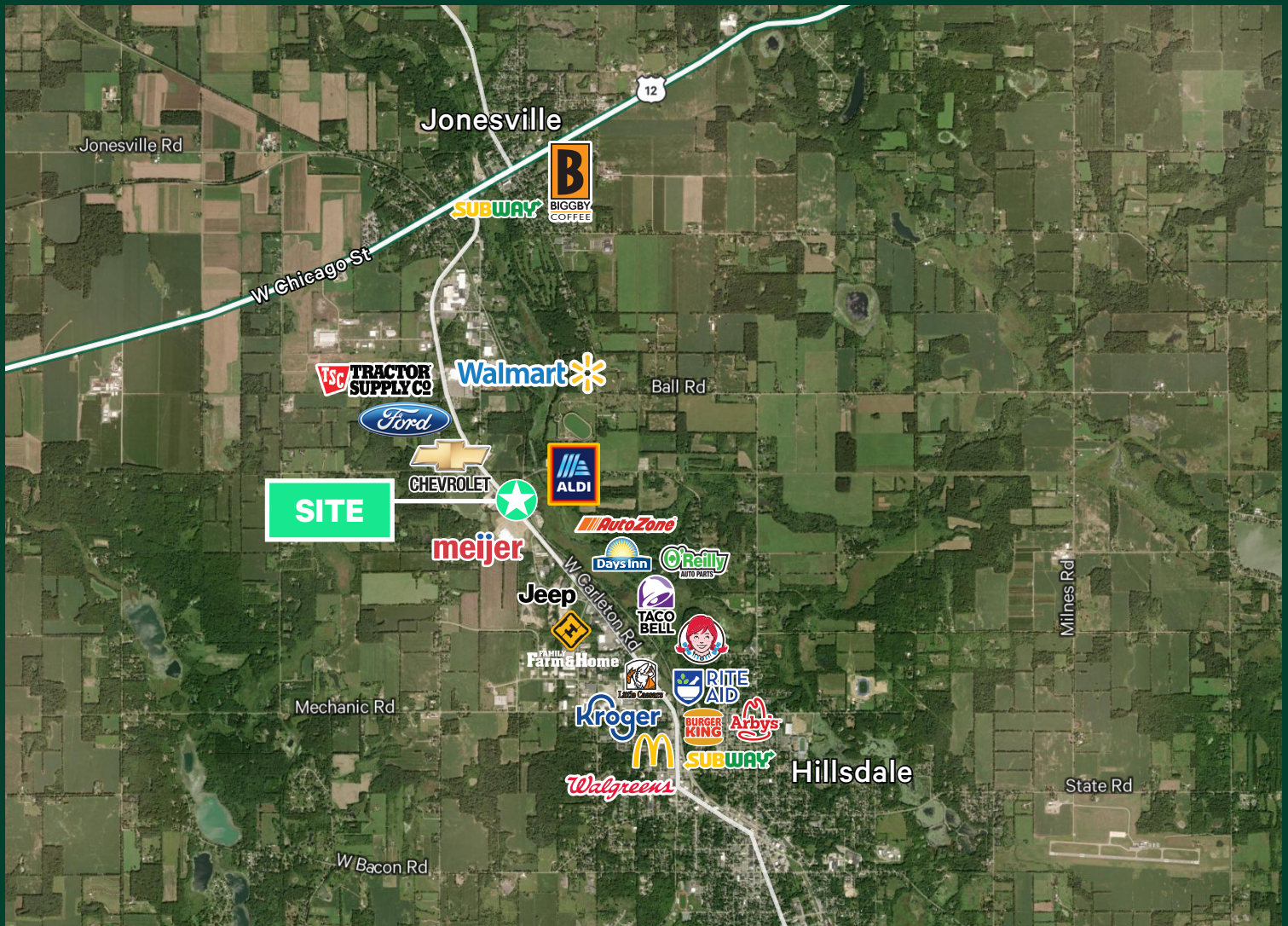
3891 W Carleton Rd | Hillsdale, MI 49242

For Sale

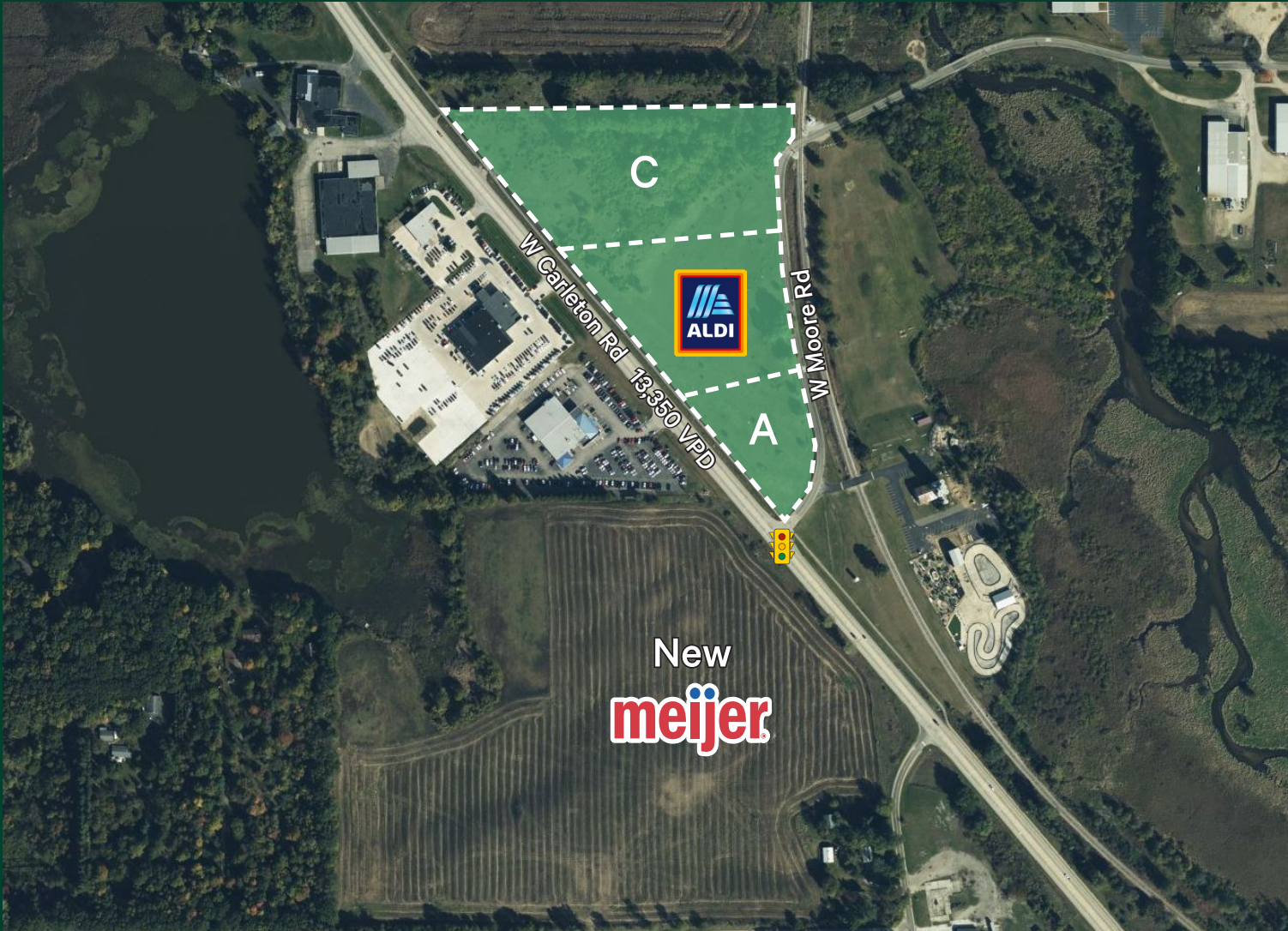
Property Highlights

- + Two parcels available next to planned ALDI
- + Parcel A: ±2.23 Acres For Sale
- + Parcel C: ±7.76 Acres For Sale
- + Excellent visibility along main retail artery in Hillsdale
- + Nearby retailers include newly opened Meijer, Planned ALDI, Kroger, Walmart, Tractor Supply Co, and many more
- + Zoned: B-3 (General Business)
- + Utilities to site
- + **Parcel A Asking Price: \$6.50 PSF & Parcel C Asking Price: \$5.00 PSF**

Macro Aerial

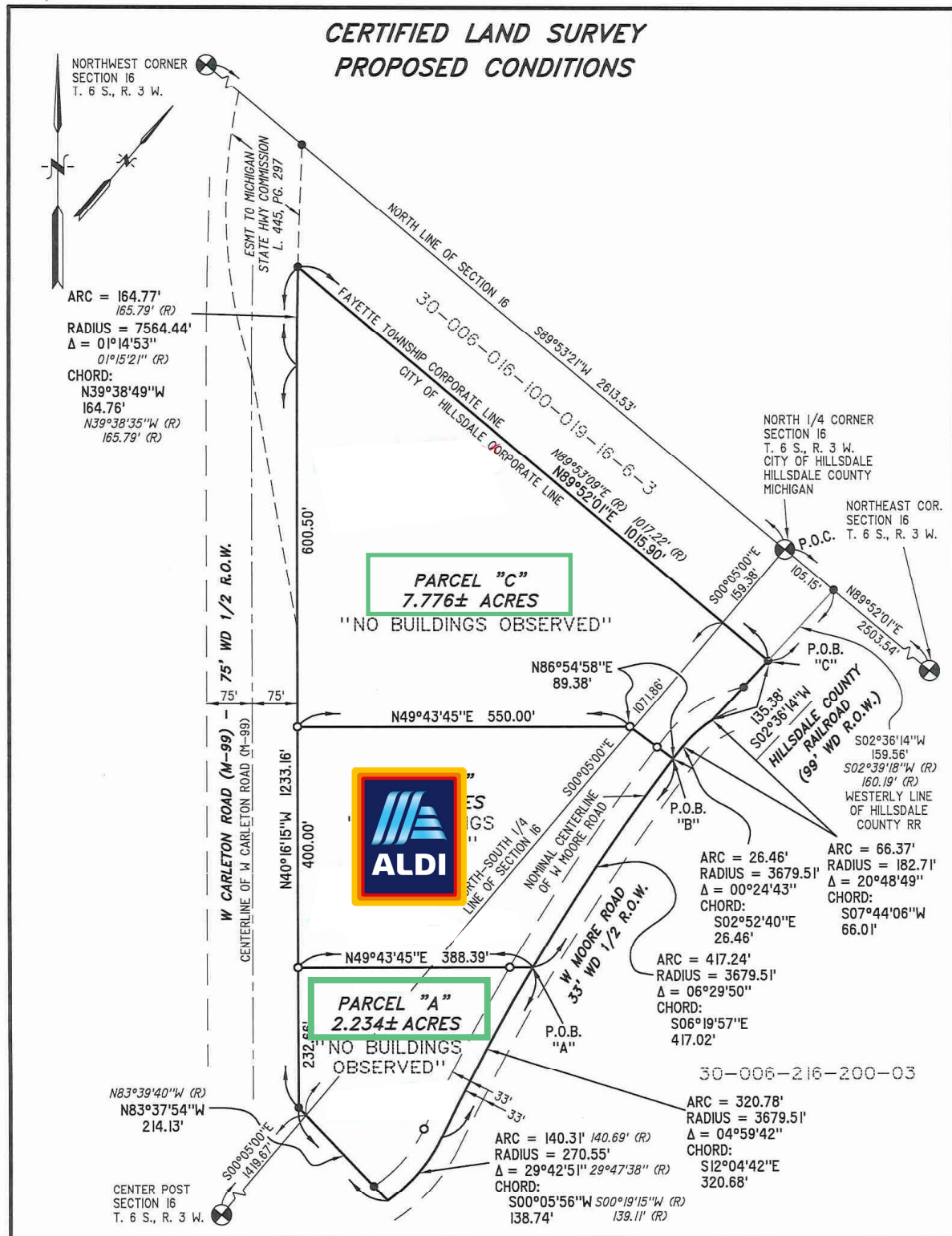


Property View

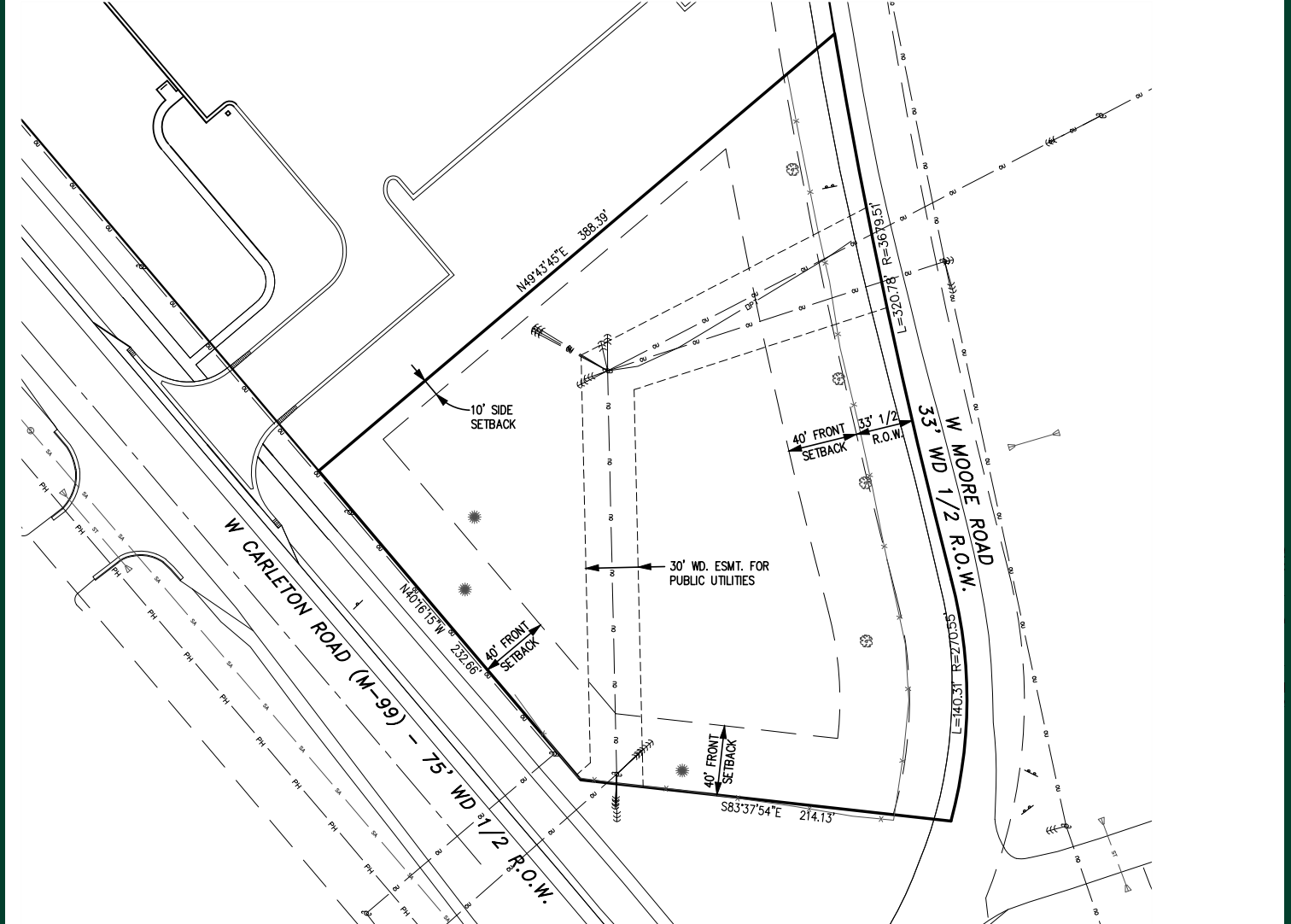


2024 Demographics	5 Mile	10 Miles	20 Miles
Population	15,245	30,195	114,465
Number of Households	6,606	13,741	53,278
Average Household Size	2.35	2.41	2.49
Average Household Income	\$76,669	\$79,260	\$87,254
Daytime Population	18,027	30,699	102,943

Land Survey



Parcel A Sketch



Contact Us

Scott Young

Senior Vice President
+1 248 936 6832
scott.young@cbre.com

Matt Croswell

First Vice President
+1 248 351 2084
matt.croswell@cbre.com

David Hesano

Senior Vice President
+1 248 351 2014
david.hesano@cbre.com

Ashley Young

Senior Associate
+1 248 353 5400
ashley.young@cbre.com

Jake Vorkapich

Transaction Manager
+1 248 351 2071
jake.vorkapich@cbre.com

© 2024 CBRE, Inc. All rights reserved. This information has been obtained from sources believed reliable but has not been verified for accuracy or completeness. CBRE, Inc. makes no guarantee, representation or warranty and accepts no responsibility or liability as to the accuracy, completeness, or reliability of the information contained herein. You should conduct a careful, independent investigation of the property and verify all information. Any reliance on this information is solely at your own risk. CBRE and the CBRE logo are service marks of CBRE, Inc. All other marks displayed on this document are the property of their respective owners, and the use of such marks does not imply any affiliation with or endorsement of CBRE. Photos herein are the property of their respective owners. Use of these images without the express written consent of the owner is prohibited.